

(A). IF YOU HAVE Windows Version 7 or NEWER

Each Setup Program will create a Shortcut link file '.lnk', on Desktop of your PC (with a name relevant to each program), from which you can launch the program with "double click".

This Software «runs» in Windows Operation System, with the «philosophy» of «Run as Administrator».

If – however – in your PC there appears an 'Error 75' or some other Error, when the Program starts, then you have to follow the next described process to solve the Problem for good :

If the Version of your Windows is Version 7 or newer (i.e. 7, Vista, 8 or 10), you must go to this this ".lnk" Shortcut and :

(a). "Right click" on this ".lnk" Shortcut and select «Properties».

(β). GoTo Tab «Compatibility» and check: «Run this program as an administrator» and, in paragraph «Compatibility mode» open the list, and select «Run this program in compatibility mode for: Windows XP (Service Pack 3)». If you do not proceed to these adjustments, launching the program will result in Error 75 and the program will quit.

These adjustments must be done ONLY THE FIRST TIME OF LAUNCHING EACH PROGRAM (JUST ONCE). Furthermore Windows will «remember» your adjustments.

The process mentioned appears successively in the four (4) Images that follow :

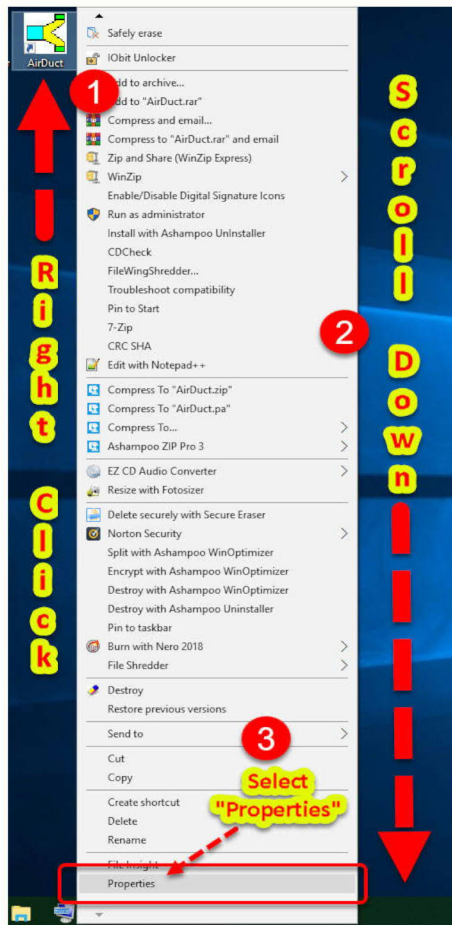


Image 1

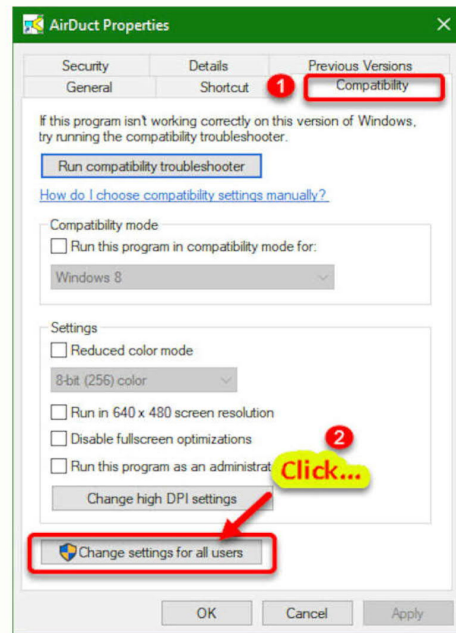


Image 2

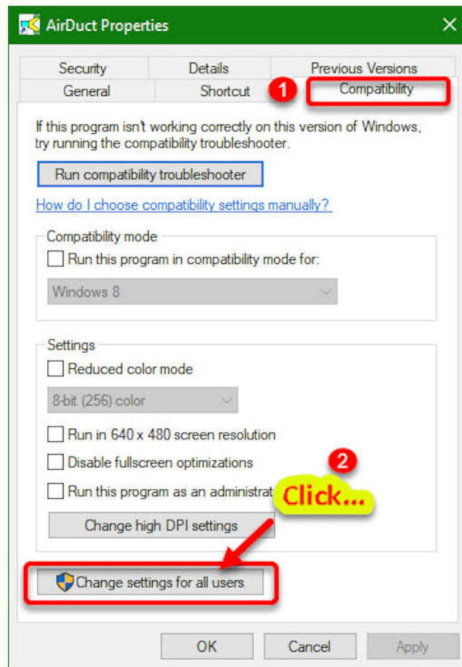


Image 3

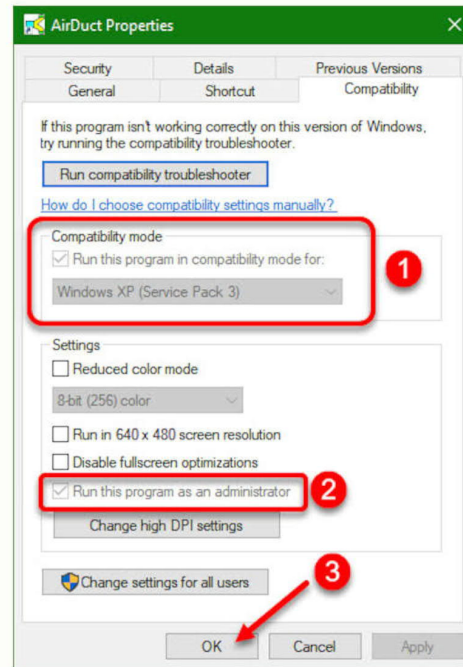


Image 4

(B). BASIC NOTE FOR PRINTINGS

Printings in the Programs of «ERGO-PSYCHTIKI S.A.», are executed with the help of Microsoft Excel (MS Excel).

For this reason you must have installed in your PC some Version of Microsoft Excel.

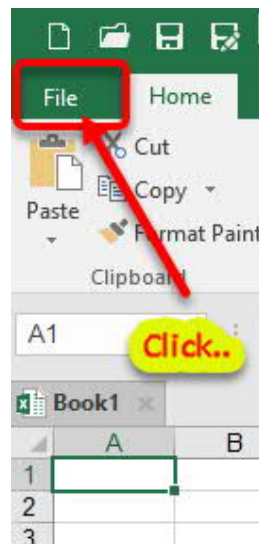
In Versions after 2003 of Microsoft Excel, there is a subject of « Trust » for the files «.xls» (και «.xlsx») due to protection against viruses.

If you have installed in your PC such a Version of MS Excel, then in order to be able to Print Data and Results from the programs without Error warnings and quitting the programs of «ERGO-PSYCHTIKI S.A.», you must JUST ONCE to follow the process described in next eight (8) Steps.

STEP (1)

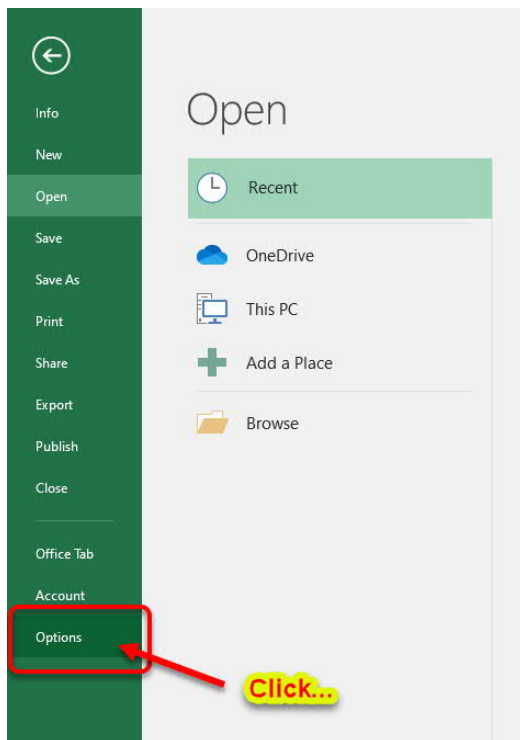
(a). Launch MS Excel.

(b). Click on «File».



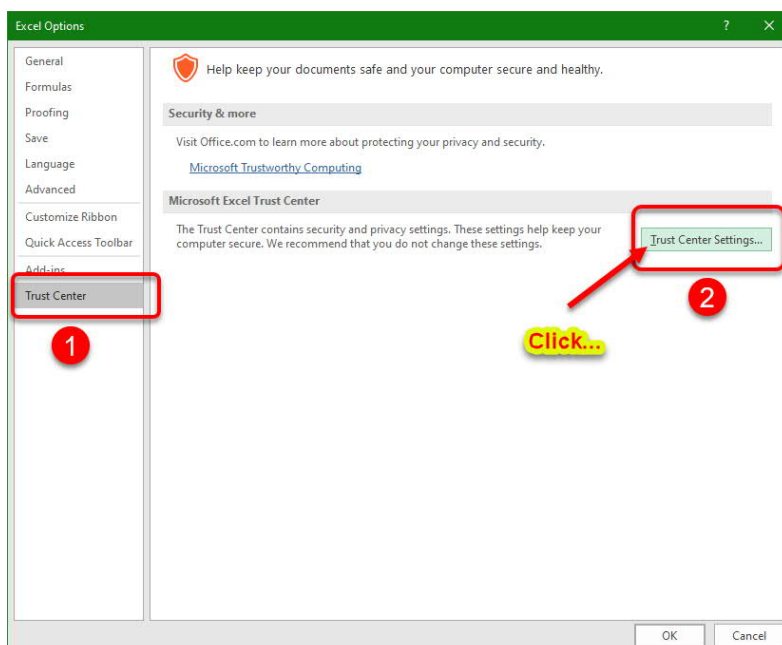
STEP (2)

Select «Options».



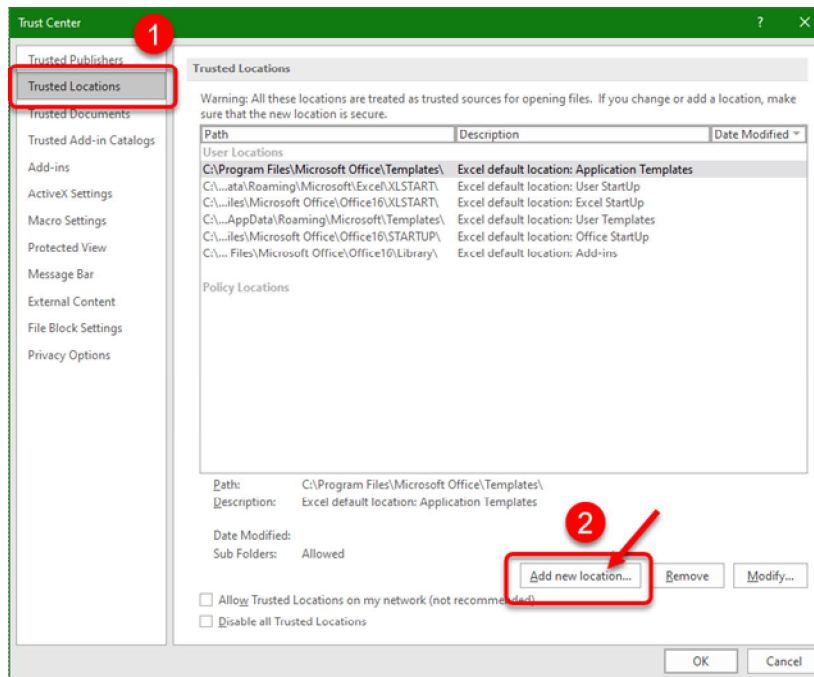
STEP (3)

Select «Trust Center» (action «1» in next image) and click on «Trust Center Settings...» (action «2» in next image).



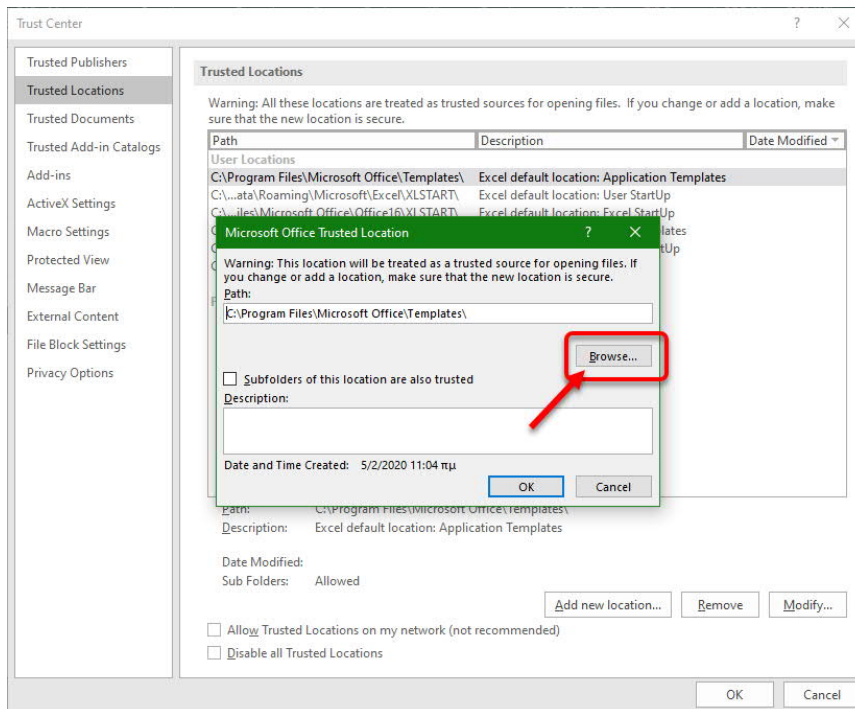
STEP (4)

From the List at left, select «Trust Locations» (action «1» in next image) and click on «Add new location...» (action «2» in next image).



STEP (5)

In the Form that will appear, click on «Browse...».

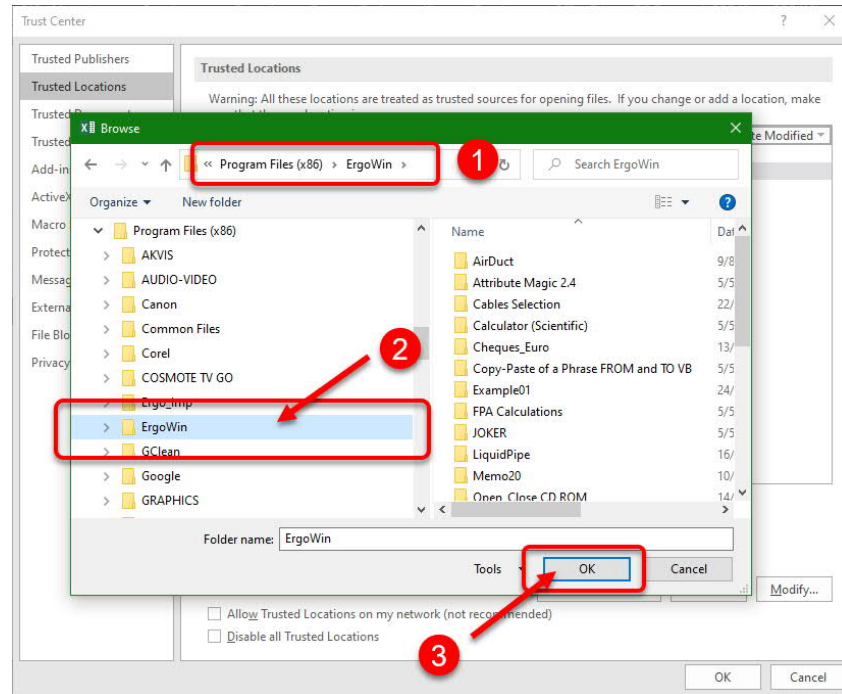


STEP (6)

(a). If your Windows is 64-bit, select Folder:

C:\Program Files (x86)\ErgoWin

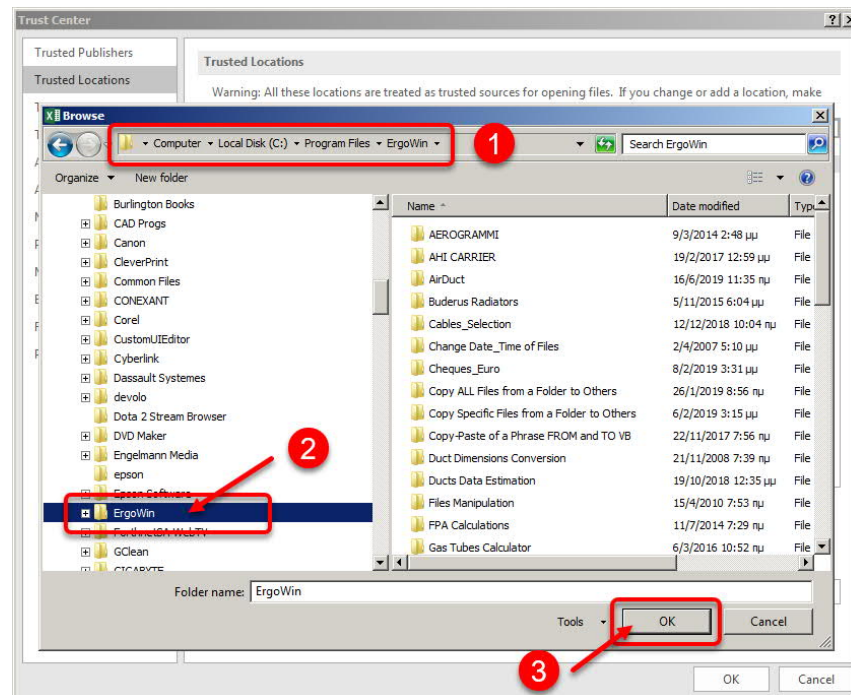
(see action « 2 » in next image) then click **OK** (action « 3 » in next image).



(b). If your Windows is 32-bit, select Folder:

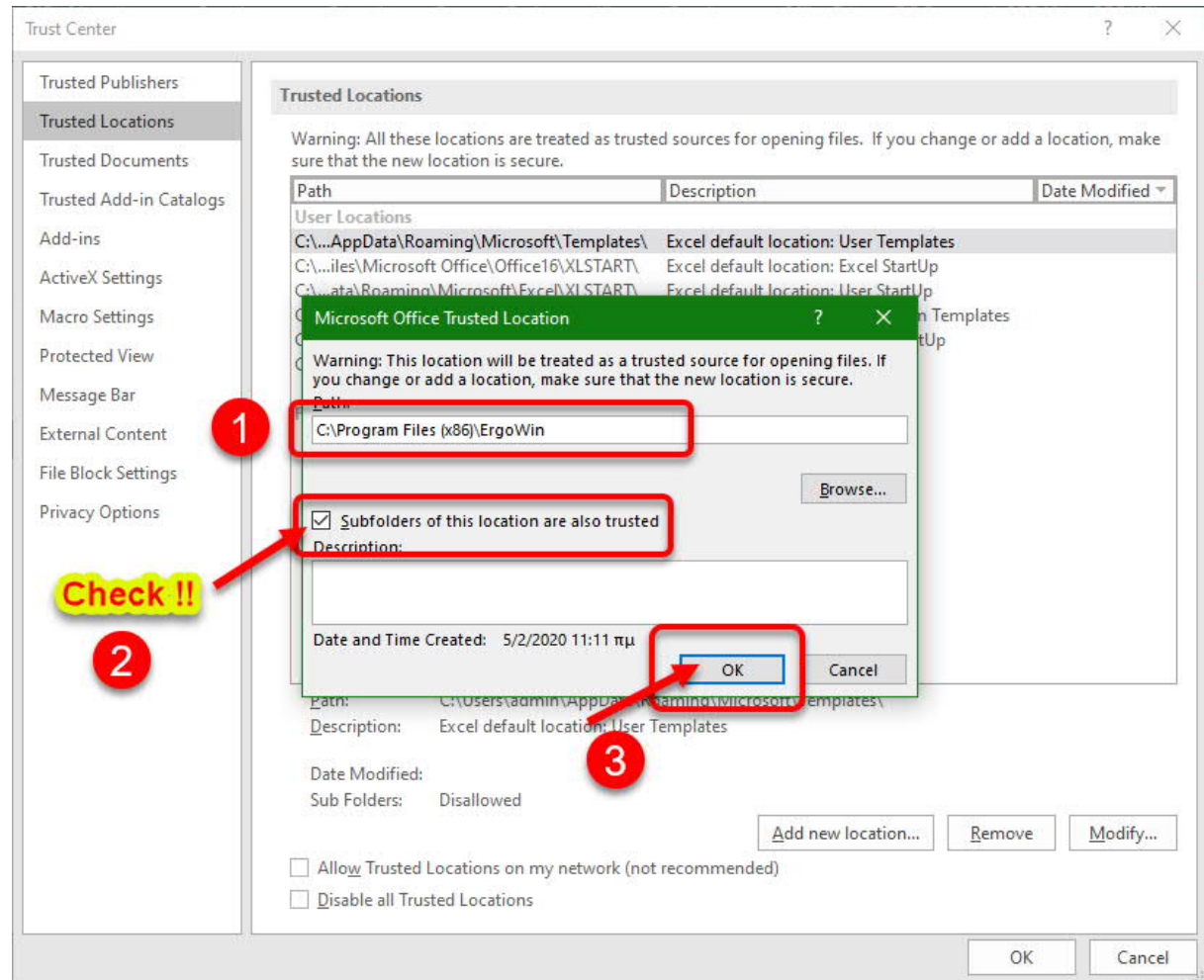
C:\Program Files\ErgoWin

(see action « 2 » in next image) then click **OK** (action « 3 » in next image).



STEP (7)

(a). If your Windows is 64-bit, the following Form will appear :



In the above image you can see that the Folder:

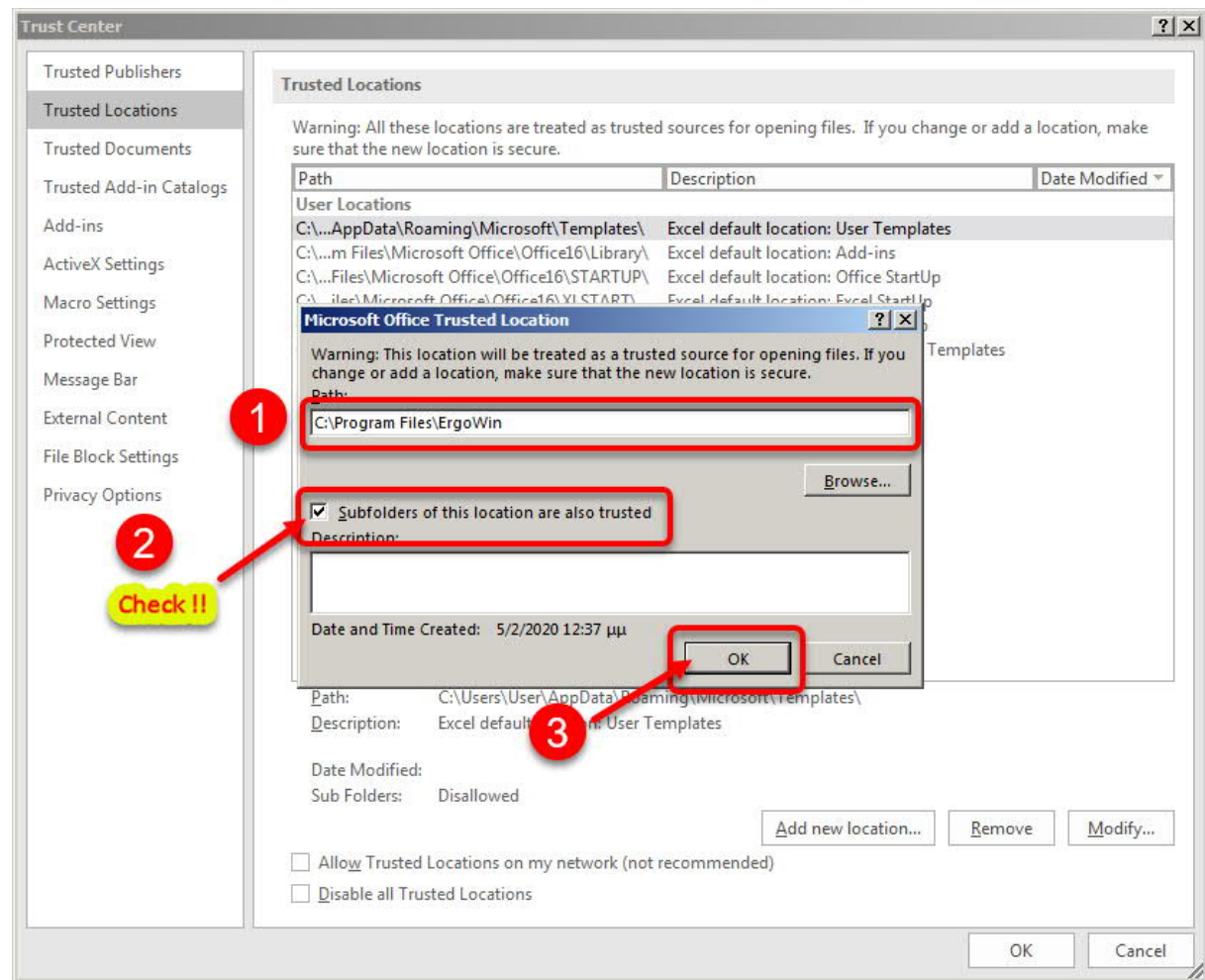
C:\Program Files (x86)\ErgoWin

has been selectes as «Trusted» (action « 1 » in the image above).

In this Form, you **M-U-S-T** check «**Subfolders of this location are also trusted**» (action « 2 » in the image above).

Then click **OK** (action « 3 » in the image above).

(b). If your Windows is 32-bit, the following Form will appear:



In the above image you can see that the Folder:

C:\Program Files\ErgoWin

has been selected as «Trusted» (action « 1 » in the image above).

In this Form, you **M-U-S-T** check «**Subfolders of this location are also trusted**» (action « 2 » in the image above).

Then click **OK** (action « 3 » in the image above).

STEP (8)

Click **OK** in the two (2) successively appearing Forms (either your Windows is 64-bit or 32-bit), and you have reached the end of this basic adjustment.

Then you can quit MS Excel.

From this time and forth, all your Printings through the programs of «ERGO-PSYCHTIKI S.A.», will normally be executed.

(C.) Registration or Activation of the Programs

You can use any program for seven (7) days or fifteen (15) uses (whichever comes first), without REGISTRATION (or ACTIVATION).

After that you MUST proceed in a REGISTRATION, in order to be able to continue using the program.

For the REGISTRATION, you must follow the instructions that will be given in the screen of your PC.

Following is the process of REGISTRATION (ACTIVATION) of any program.

INSTRUCTIONS for REGISTRATION (ACTIVATION)

(1). You have to send us by e-mail the file "-InstCode_XXXXXXXXXX.qrg", which will be created in your PC (where: 'XXXXXXXXXX' is the name of the relevant Program).

This file is automatically created after the end of seven (7) days or fifteen (15) uses, or, when you decide to proceed in REGISTRATION, before the end of seven (7) days or (15) uses.

This ".qrg" file is created in the Folder of Program's Installation, i.e. :

(a). If your Windows is 64-bit, in Folder:

C:\Program Files (x86)\ErgoWin\programfolder

(b). If your Windows is 32-bit, in Folder:

C:\Program Files\ErgoWin\programfolder

but AT THE SAME TIME in Root Directory of Disk C:\ → you can see the instructions that appear at the same time on your PC's Screen.

(Note: SubFolder "**programfolder**" has the name of each Program).

Our Company's e-mails are as follows :

info@ergo-psychtiki.gr / ergodorf@otenet.gr / dorf@ergopsiktiki.gr

(2). Answering your above mentioned e-mail of yours, we will send you back another e-mail, containing (as attached) a file 'XXXXXXXXXX.erg' (where: 'XXXXXXXXXX' is the Program's name).

(3). You must Copy this File in Folder :

"C:\Program Files (x86)\ErgoWin\XXXXXXXXXX\", if your Windows is 64-bit,

or in Folder :

"C:\Program Files\ErgoWin\XXXXXXXXXX\", if your Windows is 32-bit,

where: 'XXXXXXXXXX' is the name of the relevant Program.

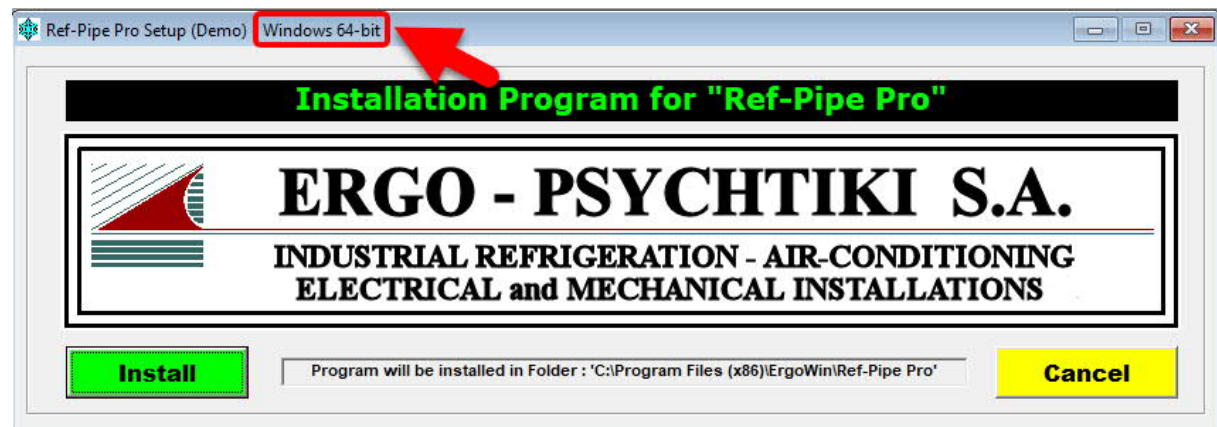
The next time that you will launch the program, it will have been "unlocked" and it will be REGISTERED (ACTIVATED).

(D.) HOW DO I KNOW IF MY Windows is 32-bit or 64-bit

There is a simple procedure through the «Properties» of Windows, but the exact way differs from Version to Version of Windows.

Fortunately there is an easier way to figure out: Launching the Setup File of Any Program of our Company «ERGO-PSYCHTIKI S.A.», the very first Form of Setup, SHOWS if your Windows is 32-bit or 64-bit, as you can easily see in the two (2) Images that follow :

(a). if your Windows is 64-bit :



(b). If your Windows is 32-bit :

